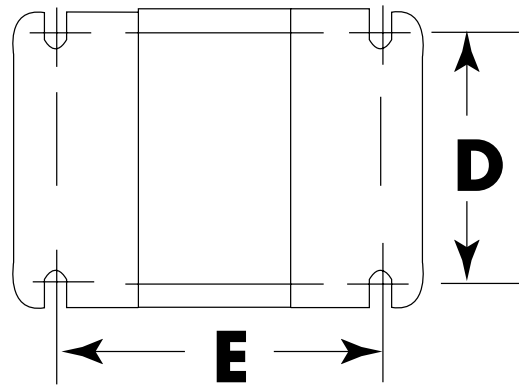
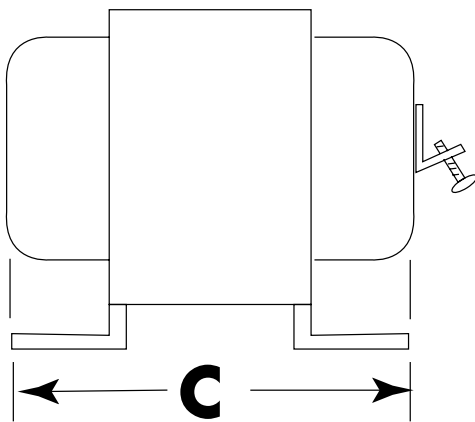
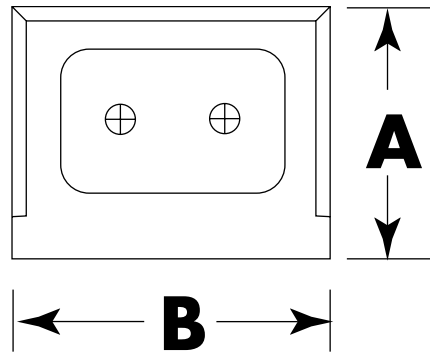


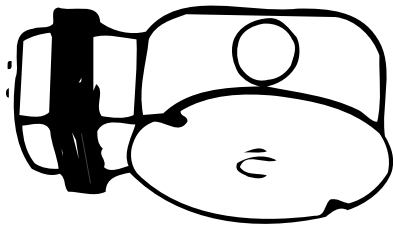
TA-590 SERIES: TRANSFORMERS DIMENSIONS

CAT. NO.	IN INCHES				
	A	B	C	D	E
TA590	2 $\frac{3}{16}$	2 $\frac{5}{16}$	1 $\frac{11}{16}$	1 $\frac{7}{8}$	1 $\frac{13}{64}$
TA591	2 $\frac{9}{16}$	1 $\frac{15}{16}$	1 $\frac{13}{16}$	1 $\frac{1}{2}$	1 $\frac{39}{64}$
TA592	2 $\frac{3}{16}$	2 $\frac{5}{16}$	1 $\frac{11}{16}$	1 $\frac{7}{8}$	1 $\frac{13}{64}$
TA598	2 $\frac{3}{16}$	2 $\frac{5}{16}$	2 $\frac{1}{2}$	1 $\frac{7}{8}$	1 $\frac{13}{16}$
TA599	2 $\frac{3}{16}$	2 $\frac{5}{16}$	2 $\frac{1}{2}$	1 $\frac{7}{8}$	1 $\frac{13}{16}$
TA1245-Y50	3 $\frac{1}{4}$	2 $\frac{3}{16}$	2 $\frac{1}{2}$	1 $\frac{3}{4}$	1 $\frac{3}{4}$
TA1245-Y75	3 $\frac{1}{4}$	2 $\frac{3}{16}$	3	1 $\frac{3}{4}$	2 $\frac{3}{16}$

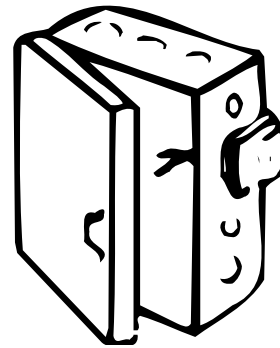


TA-590 SERIES: TRANSFORMERS MOUNTING OPTIONS

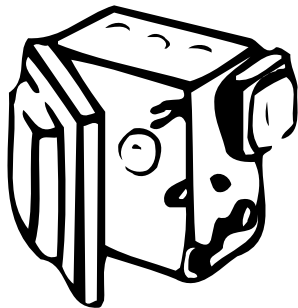
CATALOG NO	UPC CODE	TYPE	VOLTS-AMPS (VA)	PRIMARY VOLTAGE	SECONDARY VOLTAGE	Hz
TA590	96104	BELL	5	120	10	60
A591	96105	CHIME	10	120	16	60
TA592	96106	TRI-VOLT	10-10-20	120	8-16-24	50/60
A598	96102	TRI-VOL	20-30-30	120	8-16-24	60
TA599	96108	HEAVY DUTY	40	120	24	60
TA1245Y-50	96166	HEAVY DUTY	50VA	120/208/240	24	60
TA1245Y-75	96167	HEAVY DUTY	75VA	120/208/240	24	60



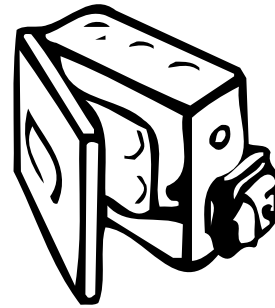
**OUTLET
BOX**



**WIRING
CPTMT**



**SWITCH
BOX**



**FUSE
BOX**