

REFERENCE:

FL80
16" AREA FLOODLIGHT



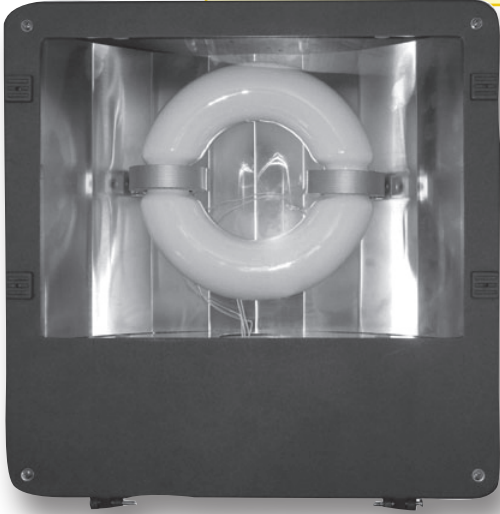
APPLICATIONS

- Large area perimeter and security lighting
- Industrial, storage yards, parking areas, auto dealerships, landscape and recreational areas.

SPECIFICATIONS

- Heavy duty die cast aluminum housing and hinged top frame
- 1/2" coin plugs for conduit & photocell
- Textured architectural bronze powder finish over a chromate conversion coating.
- Aluminum smooth reflector with tempered flat clear glass lens.
- 2-piece swivel bracket, adjustable slipfitter for mounting housing.
- Listed for wet locations.
- Lamp Included

**LONG LAMP LIFE
ENERGY SAVINGS**

DIMENSIONS

H	W	D
16.63"	16.13"	7"



ORDERING INFO.

CATALOG NO.	UPC CODE	DESCRIPTION	VOLTS	BALLAST	LAMP	SHIPPING WEIGHT (LBS)
FL80IND120BR	06421	16" FLOOD 80 WATT BRACKET MOUNT	120	ELECTRONIC	INDUCTION	24
FL80IND277BR	06423	16" FLOOD 80 WATT BRACKET MOUNT	277	ELECTRONIC	INDUCTION	24
FL80IND120SF	06422	16" FLOOD 80 WATT SLIPFITTER MOUNT	120	ELECTRONIC	INDUCTION	24
FL80IND277SF	06424	16" FLOOD 80 WATT SLIPFITTER MOUNT	277	ELECTRONIC	INDUCTION	24

The compliance of our products to individual project specifications and approval for their use, is not warranted by NSi Lighting Products. Specification sheets and photometric data are provided as a guideline for applications information. Final consideration of any given application must take into consideration knowledge of the specific installation environment.

Questions call NSi Lighting Products at 1-800-321-5847