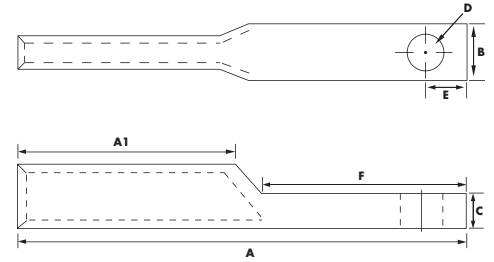


LONG BARREL COPPER LUGS - L SERIES - ONE HOLE

See Appendix B for proper Connection instructions PG 82



Produced from high conductivity copper tubing. Tin-Plated to provide corrosion resistance. Marked with die index and color coded. Listed for 35 KV maximum when properly installed. For applications greater than 2000 volts, consult the cable manufacturer for voltage stress relief instructions.



CONTINUED ON NEXT PAGE

CAT. NO.	UPC CODE	STUD SIZE	STRIP LENGTH (IN)	COLOR CODE	ID	OD	A	A1	B	C	D	E	F
L610	03460	#10	1-1/4	blue	0.20	0.30	1.77	0.98	0.42	0.08	0.25	0.30	0.67
L614	03400	1/4	1-1/4	blue	0.20	0.30	1.77	0.98	0.42	0.08	0.41	0.37	0.81
L656	03429	5/16	1-1/4	blue	0.20	0.30	1.91	0.98	0.59	0.08	0.25	0.30	0.67
L638	03428	3/8	1-1/4	blue	0.20	0.30	1.91	0.98	0.59	0.08	0.41	0.37	0.81
L410	03461	#10	1-1/4	gray	0.25	0.34	1.77	0.98	0.49	0.09	0.25	0.31	0.67
L414	03441	1/4	1-1/4	gray	0.25	0.34	1.77	0.98	0.49	0.09	0.41	0.37	0.81
L456	03401	5/16	1-1/4	gray	0.25	0.34	1.77	0.98	0.49	0.09	0.33	0.31	0.67
L438	03402	3/8	1-1/4	gray	0.25	0.34	1.91	0.98	0.59	0.09	0.21	0.31	0.67
L314	03423	1/4	1-1/4	white	0.27	0.38	2.15	1.18	0.55	0.09	0.25	0.31	0.78
L356	03422	5/16	1-1/4	white	0.27	0.38	2.15	1.18	0.55	0.09	0.33	0.34	0.78
L338	03403	3/8	1-1/4	white	0.27	0.38	2.35	1.33	0.55	0.09	0.41	0.43	0.83
L256	03465	5/16	1-3/8	brown	0.31	0.42	2.07	1.10	0.60	0.10	0.33	0.37	0.81
L238	03404	3/8	1-3/8	brown	0.31	0.42	2.07	1.10	0.60	0.10	0.41	0.37	0.81
L214	03421	1/4	1-3/8	brown	0.31	0.42	2.07	1.10	0.60	0.10	0.25	0.37	0.81
L138	03405	3/8	1-1/2	green	0.36	0.47	2.11	1.10	0.67	0.11	0.41	0.37	0.81

COPPER CABLE ONLY

CATALOG NO.	CLASS B OR C BUILDING WIRE CU CABLE		CLASS 1 FLEXIBLE CABLE #24 CU STRANDS		CLASS K WELDING CABLE #30 CU STRANDS		DIESEL LOCOMOTIVE CABLE #24 CU STRANDS		CATALOG NO.	CLASS B OR C BUILDING WIRE CU CABLE		CLASS 1 FLEXIBLE CABLE #24 CU STRANDS		CLASS K WELDING CABLE #30 CU STRANDS		DIESEL LOCOMOTIVE CABLE #24 CU STRANDS	
	SIZE	STRANDING	SIZE	STRANDING	SIZE	STRANDING	SIZE	STRANDING		SIZE	STRANDING	SIZE	STRANDING	SIZE	STRANDING	SIZE	STRANDING
L610	6	7 or 19	6	63/24	-	-	-	-	L2038	2/0	19 or 37	1/0	266/24	1/0	1064/30	1/0	275/24
L614	6	7 or 19	6	63/24	-	-	-	-	L2048	2/0	19 or 37	1/0	266/24	1/0	1064/30	1/0	275/24
L656	6	7 or 19	6	63/24	-	-	-	-	L3038	3/0	19 or 37	2/0	342/24	2/0	1323/30	2/0	325/24
L638	6	7 or 19	6	63/24	-	-	-	-	L3048	3/0	19 or 37	2/0	342/24	2/0	1323/30	2/0	325/24
L410	4	7 or 19	-	-	-	-	-	-	L4038	4/0	19 or 37	-	-	3/0	1666/30	3/0	450/24
L414	4	7 or 19	-	-	-	-	-	-	L4048	4/0	19 or 37	-	-	3/0	1666/30	3/0	450/24
L456	4	7 or 19	-	-	-	-	-	-	L25048	250	37 or 61	-	-	-	-	-	-
L438	4	7 or 19	-	-	-	-	-	-	L30048	300	37 or 61	4/0	532/24	4/0	2107/30	4/0	550/24
L314	3	7 or 19	-	-	-	-	-	-	L35048	350	37 or 61	-	-	-	-	262	650/24
L356	3	7 or 19	-	-	-	-	-	-	L40048	400	37 or 61	-	-	-	-	313	775/24
L338	3	7 or 19	-	-	-	-	-	-	L50048	500	37 or 61	350	882/24	-	-	373	925/24
L256	2	7 or 19	-	-	-	-	-	-	L50058	500	37 or 61	350	882/24	-	-	373	925/24
L238	2	7 or 19	-	-	-	-	-	-	L60058	600	61 or 91	-	-	-	-	444	1100/24
L214	2	7 or 19	-	-	-	-	-	-	L75058	750	61 or 91	-	-	-	-	646	1600/24
L138	1	19 or 37	2	161/24	2	665/30	2	150/24	L10058	1000	61 or 91	750	1862/24	-	-	777	1925/24
L1038	1/0	19 or 37	-	-	1	836/30	1	225/24									
L1048	1/0	19 or 37	-	-	1	836/30	1	225/24									